



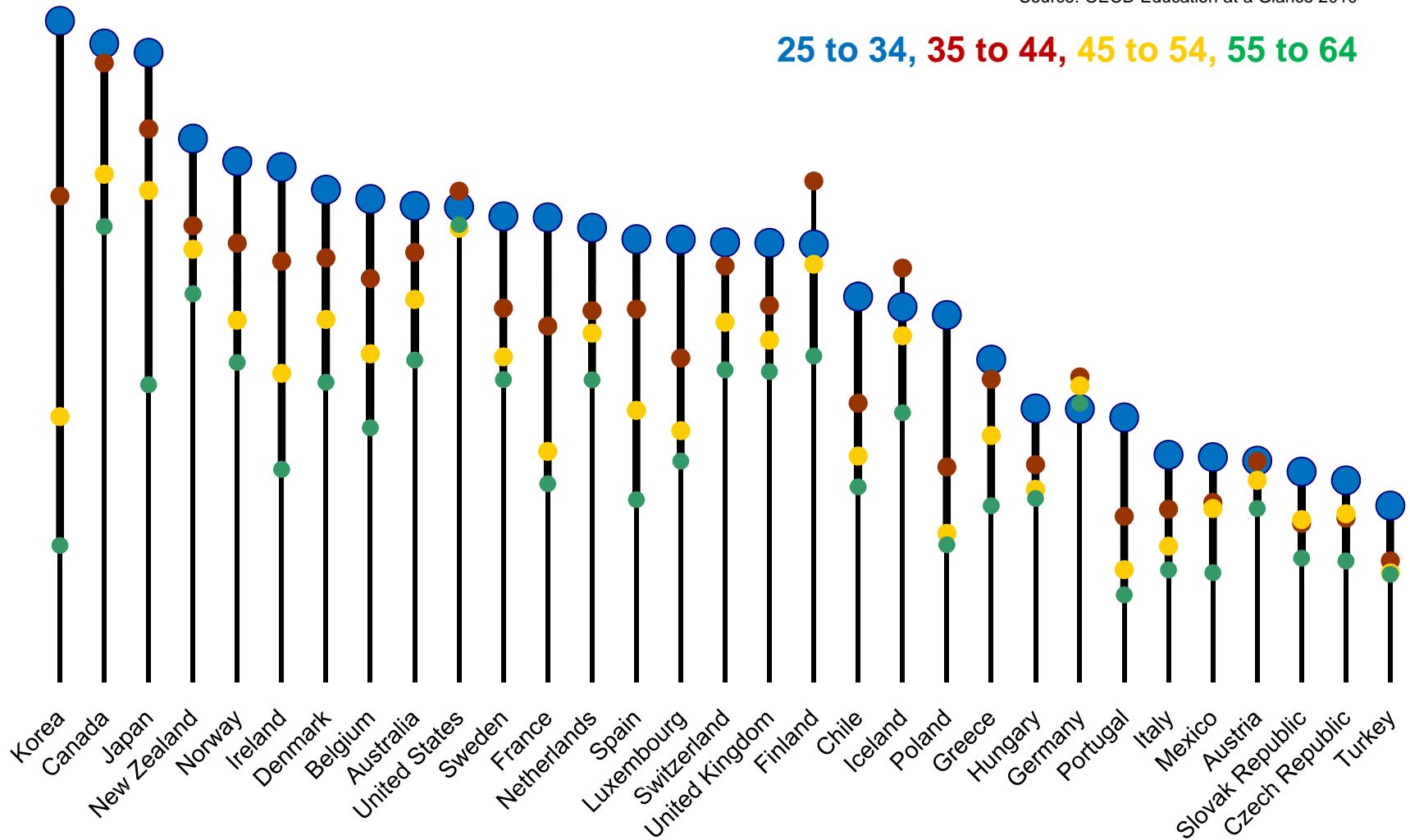
The big goal:

**To increase the proportion of
Americans with **high-quality degrees
and credentials** to **60 percent** by the
year **2025**.**

Percent of adults with 2- or 4-year degree

Source: OECD Education at a Glance 2010

25 to 34, 35 to 44, 45 to 54, 55 to 64



Massachusetts

 Minnesota
 New York
 North Dakota/Iowa/Connecticut
 New Jersey
 Maryland
 New Hampshire/Nebraska
 South Dakota/Illinois/Pennsylvania/Vermont
 Virginia/Kansas/Rhode Island
 Colorado
 Wisconsin/Washington/Hawaii
 Utah/Missouri/Montana/Ohio
 California/DE/NC/MI/IN/ID
 Florida/Oregon/South Carolina/Maine
 Wyoming/Georgia

 Mississippi/Alabama
 KY/TN/OK/AZ/AK/TX
 New Mexico

 Nevada

 Louisiana/West Virginia
 Arkansas

58
 56
 54
 52
 50
 48
 46
 44
 42
 40
 38
 36
 34
 32
 30
 28
 26
 24
 22

Korea
 Canada
 Japan

 New Zealand

 Norway
 Ireland
 Denmark

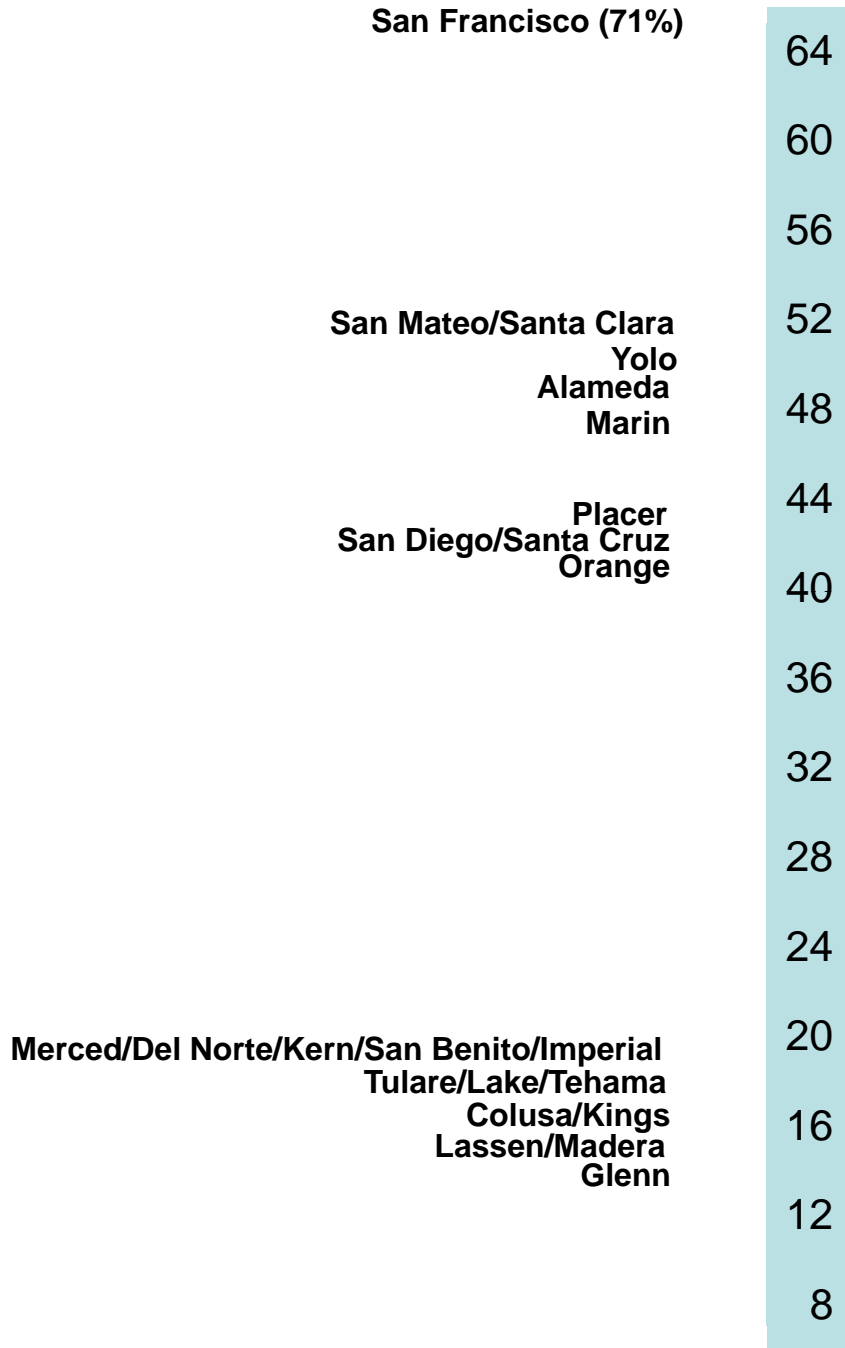
 United States/Belgium/Australia
 Sweden/France
 Netherlands
 Spain/Luxembourg
 UK/Finland/Switzerland

 Chile
 Iceland
 Poland

 Greece

 Germany/Hungary
 Portugal
 Italy/Mexico

US states
 25 to 34 year olds



Korea
Canada
Japan

California counties
25 to 34 years old
(population over 20,000)

New Zealand
Norway
Ireland
Denmark

United States/Belgium/Australia
Sweden/France/Netherlands
Spain/Luxembourg/UK/Finland/Switzerland

Chile
Iceland
Poland

Greece

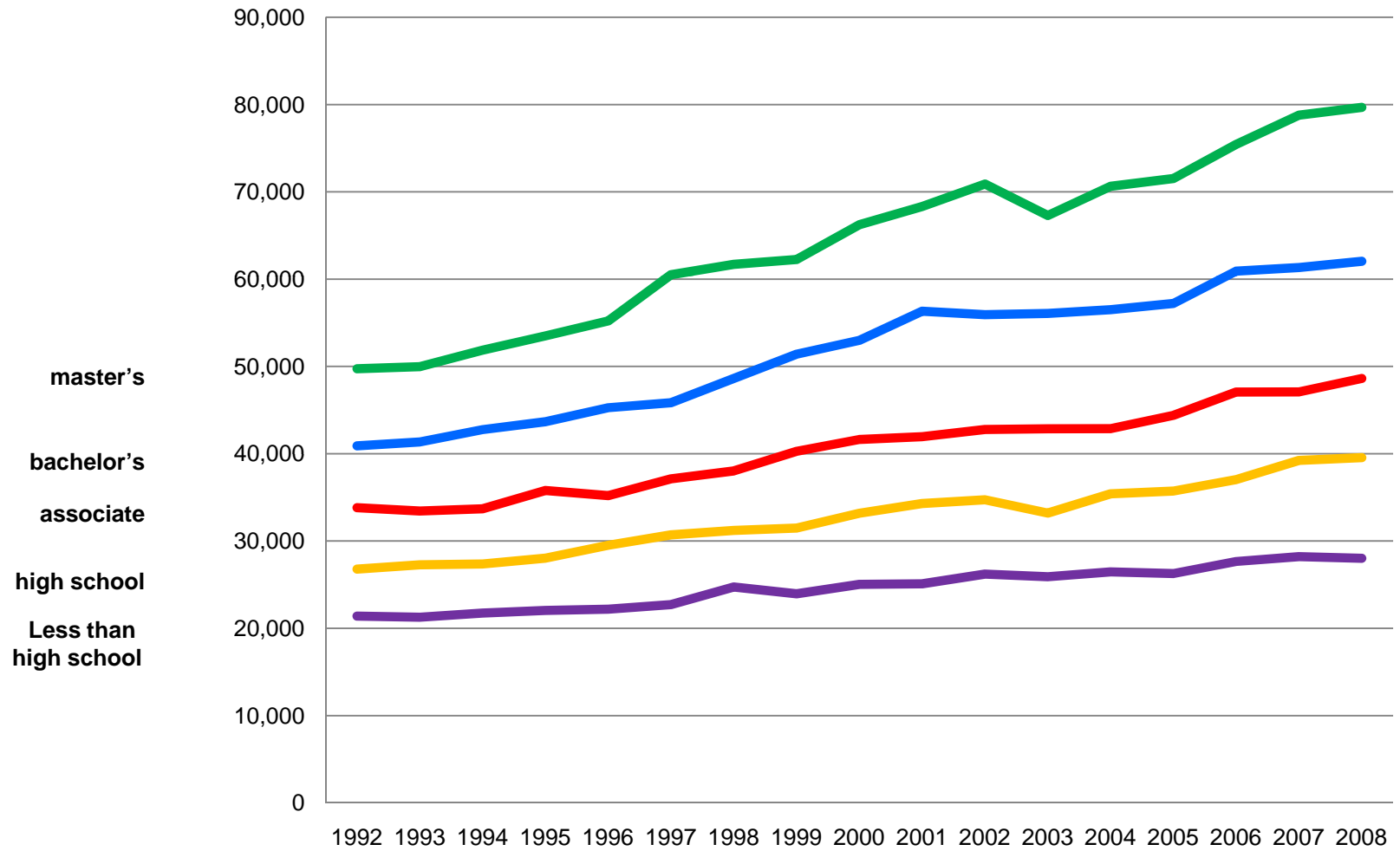
Germany/Hungary
Portugal

Italy/Mexico
Austria
Czech Republic/Slovak Republic

Turkey

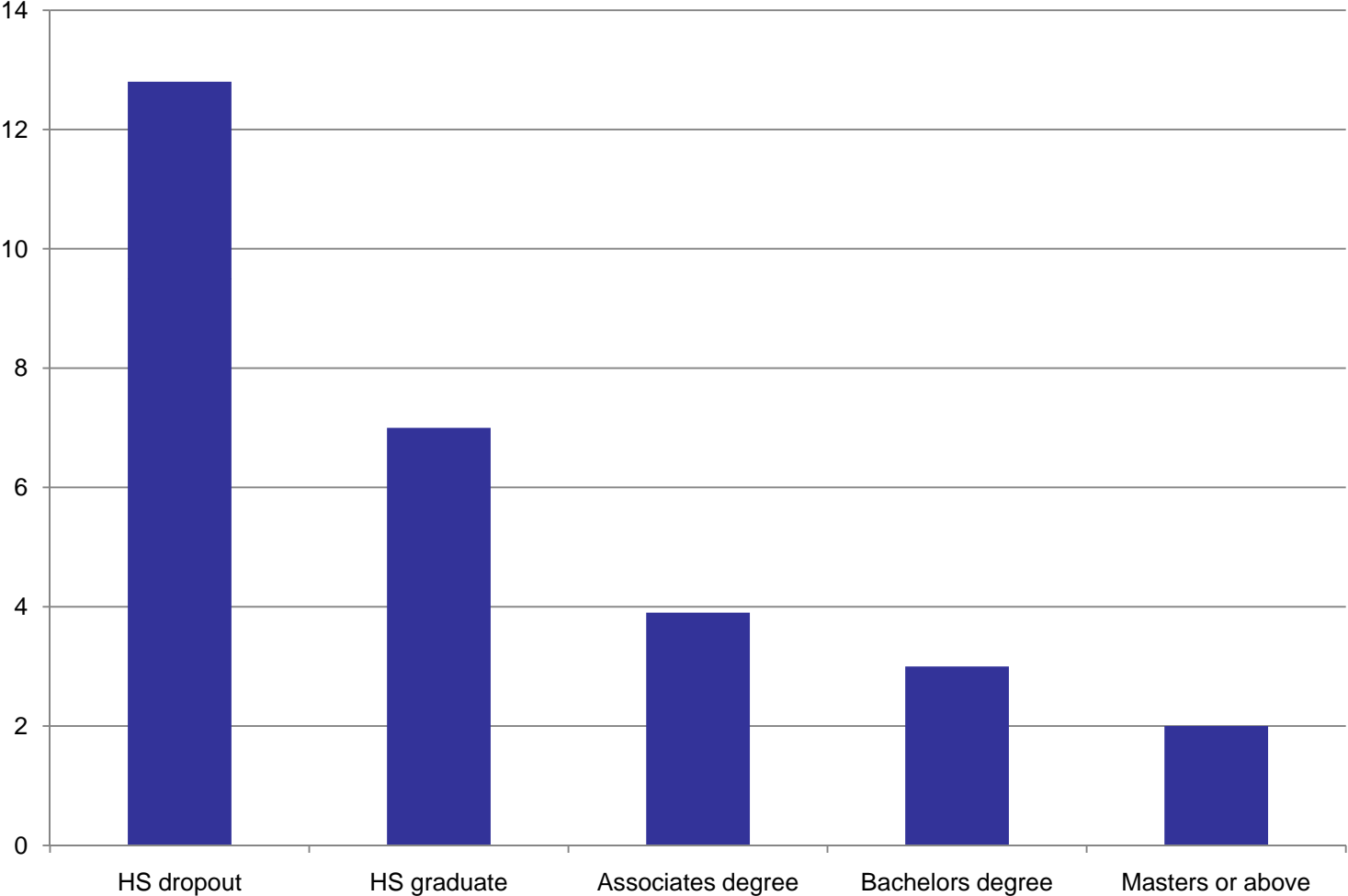
Income by level of education

Source: US Census, Current Population Survey



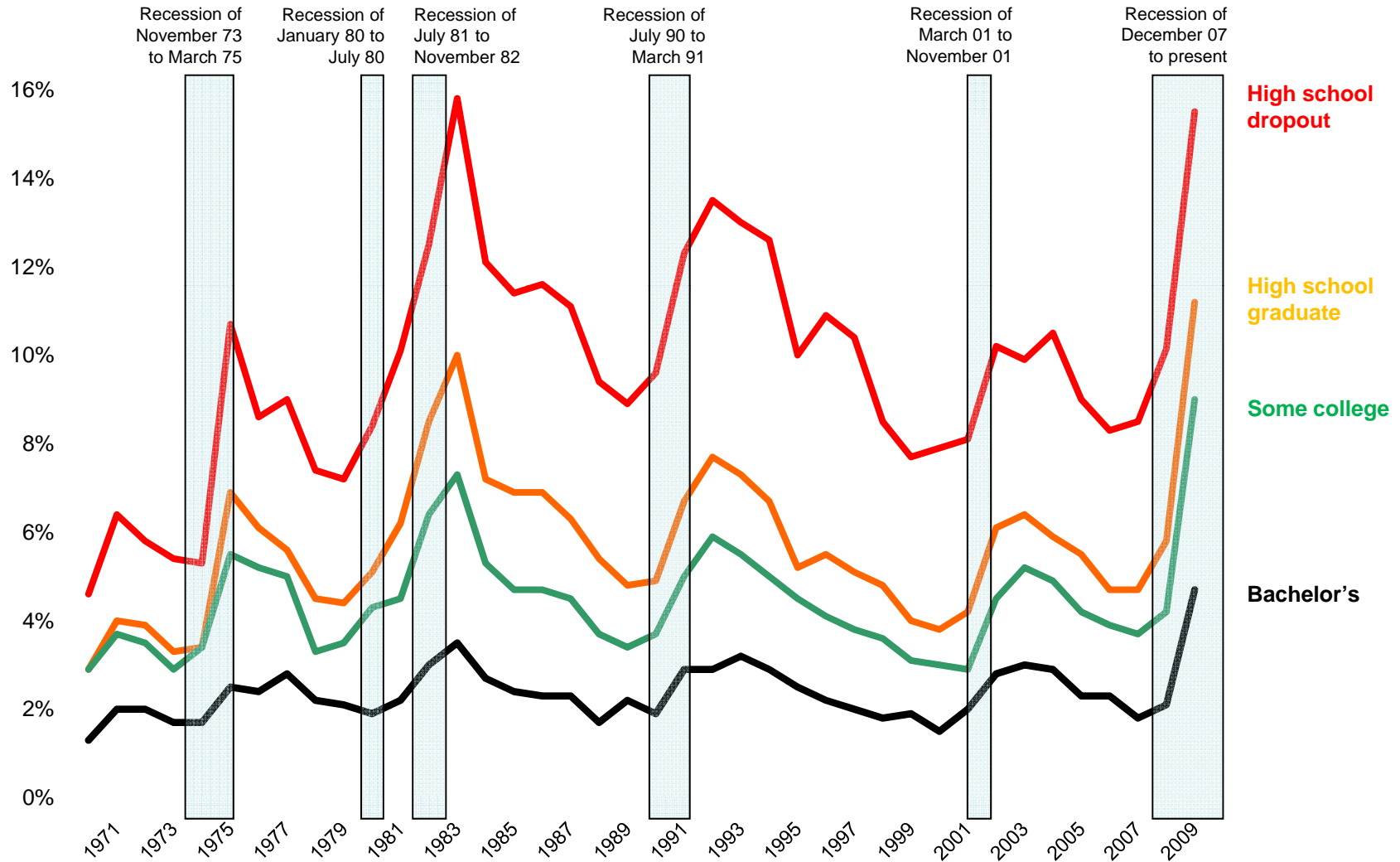
Unemployment by level of education

Source: Bureau of Labor Statistics, 2008



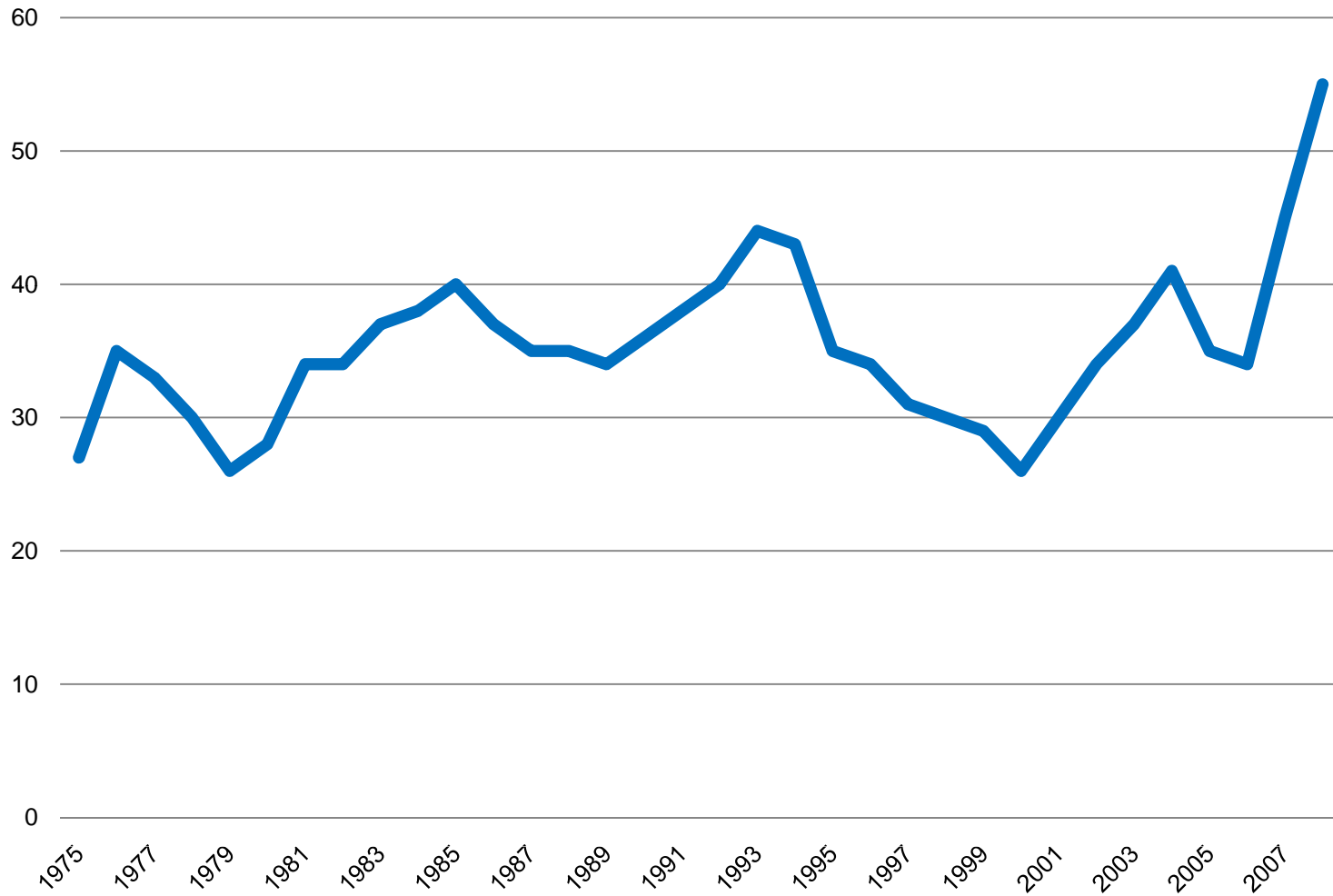
Unemployment by level of education

Source: US Census, Current Population Survey



Percent of layoffs that are permanent

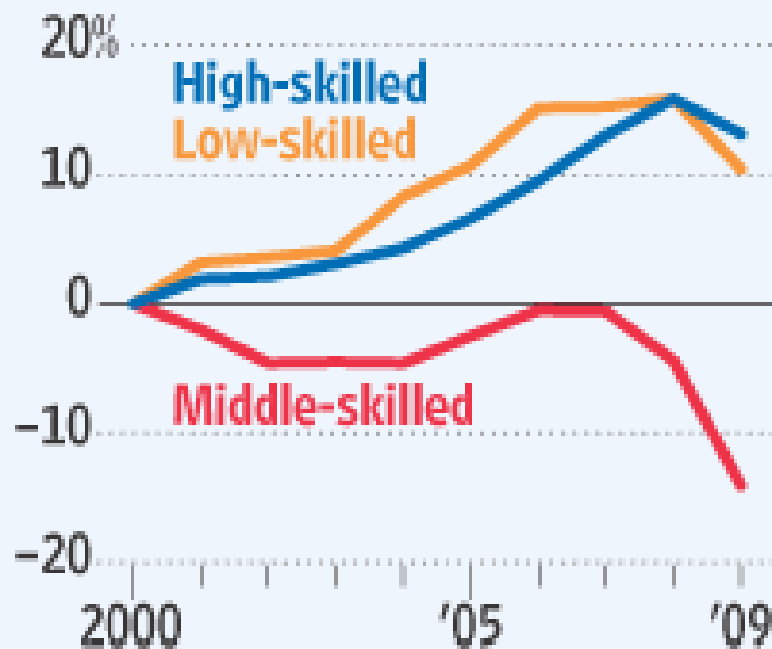
Source: Bureau of Labor Statistics, CNBC



Stuck in the Middle

The recession has accelerated a longer-term decline in middle-skilled, middle-wage jobs.

Cumulative change in employment since 2000, by skill level



Sources: David Autor, MIT; Labor Dept.

Between 2008 and 2018, new jobs in **California** requiring postsecondary education and training will grow by **1.3 million** while jobs for high school graduates and dropouts will grow by **614,000**.

Between 2008 and 2018, California will create **5.5 million** job vacancies both from new jobs and from job openings due to retirement.

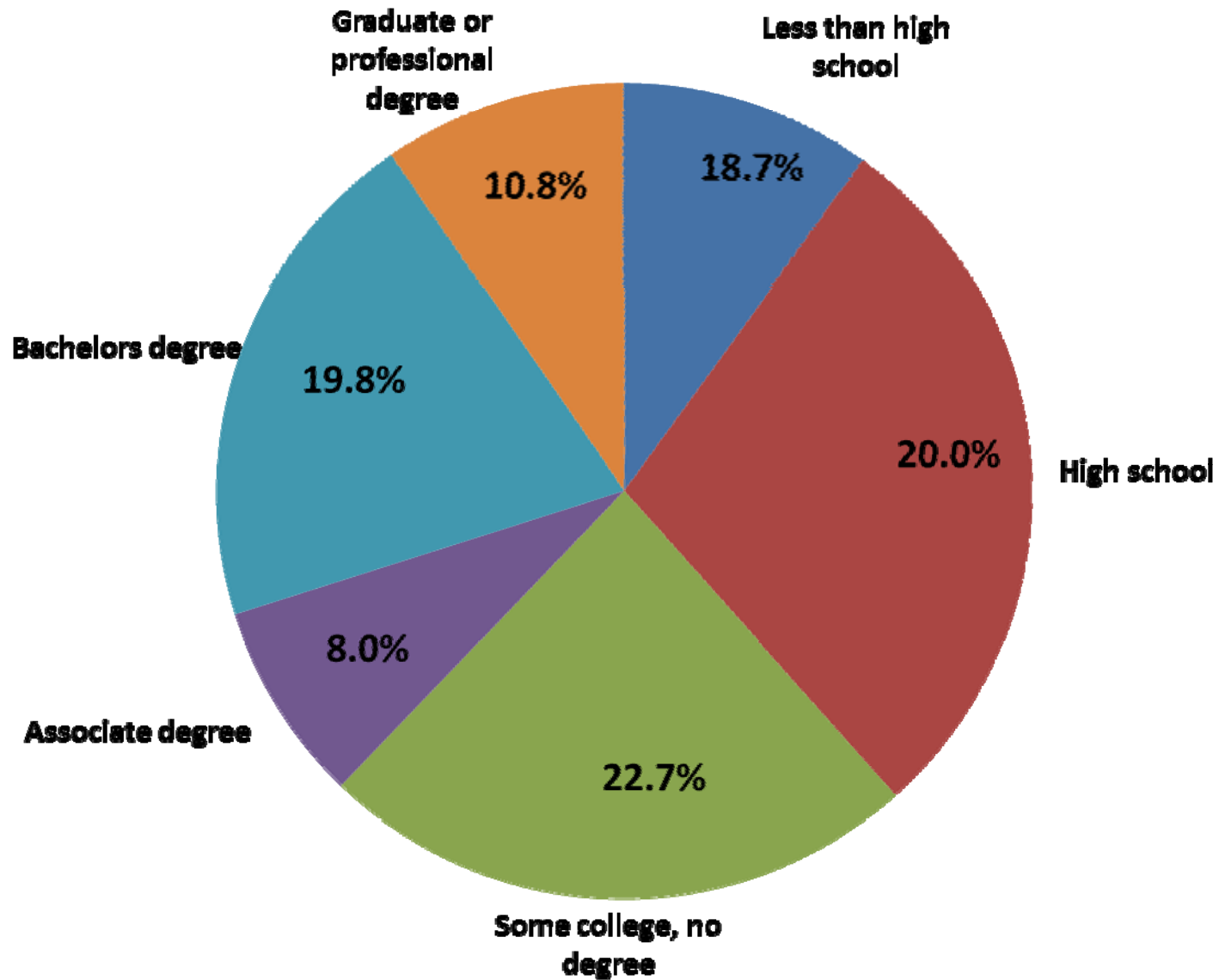
3.3 million of these job vacancies will be for those with postsecondary credentials, **1.2 million** for high school graduates and **1 million** for high school dropouts.

61% of all jobs in California (12 million jobs) will require some postsecondary training beyond high school in 2018.

Source: **Help Wanted: Projections of Jobs and Education Requirements Through 2018**
The Georgetown University Center on Education and the Workforce

Reaching 60% attainment in California

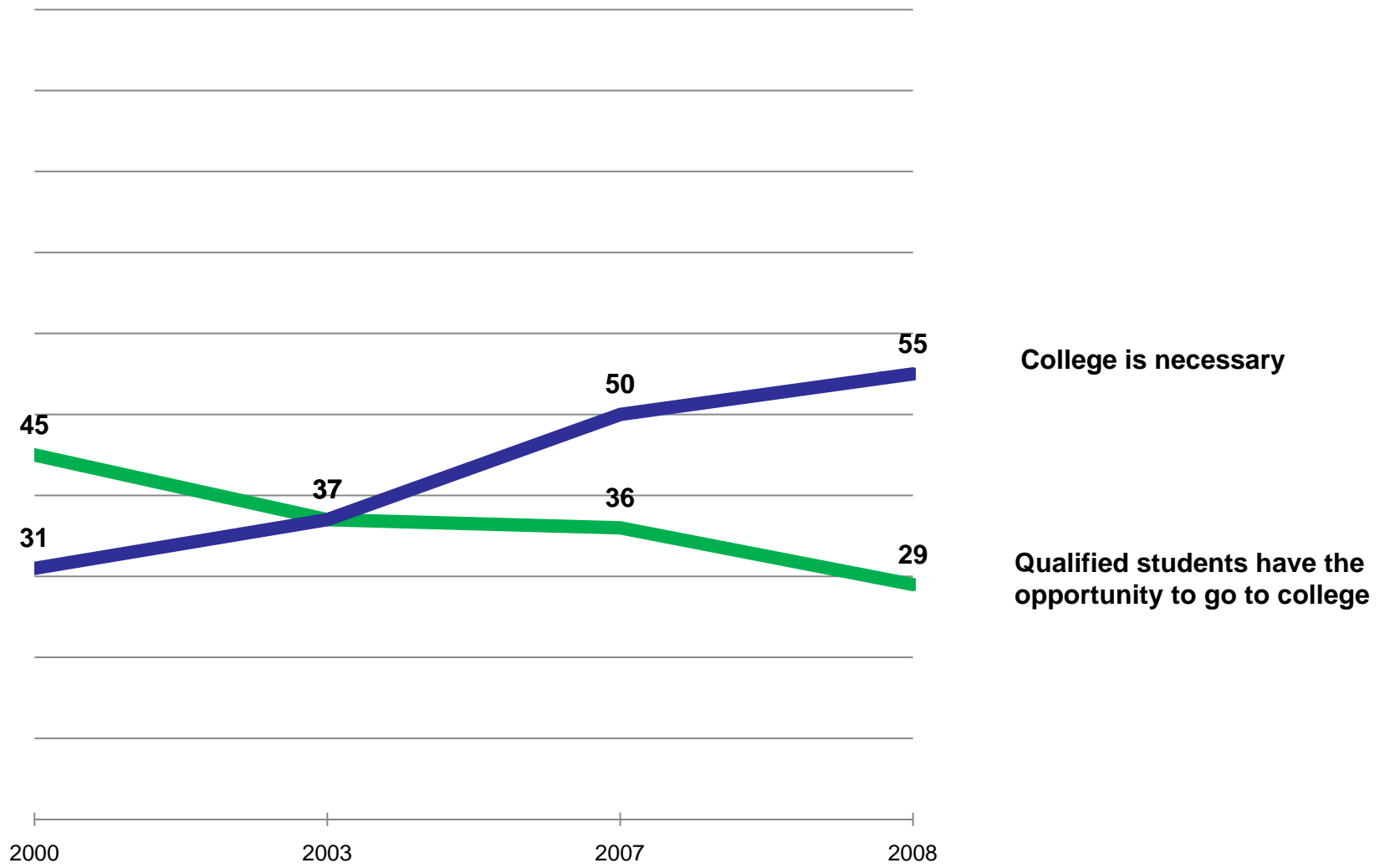
Current % of college graduates (25 to 64)	38.6%
% in 2025 at current rates of increase	44.7%
Additional degrees needed to reach 60%	4,745,000
Current annual production of degrees	255,662
Annual increase needed	34,848



In California, 4,400,015 working-age adults have attended college but don't have a degree.



Lumina defines **high-quality credentials** as degrees and certificates that have **well-defined and transparent learning outcomes** which provide **clear pathways to further education and employment.**



Source: Public Agenda and National Center for Public Policy and Higher Education

www.luminafoundation.org

dmatthews@luminafoundation.org

